



EarthWalk MiniMax Series

Accommodates 24 to 40 users

SUPPORTS:



Mac



iPad



EarthWalk's MiniMax™ series of mobile carts are designed to deploy the maximum number of devices when classroom space is at a minimum.

Available in 24- to 40-user models, the MiniMax series features premium, welded steel construction with a budget-minded, small footprint and optional configurations—ensuring that even your largest classes are covered and connected.

Optional Device Sterilization Package CleanZone Sanitation

EarthWalk utilizes ozone technology to safely and efficiently kill germs, viruses and bacteria on all devices inside the cart. Decontamination is a quick cycle and there is no chemical residue: Ozone dissipates back to oxygen. Can fully sterilize up to 40 devices more efficiently than UV or chlorine/chemicals.



Customized Graphic Options

Door Graphics and Full Cart Wraps

Carts can be personalized showing your school logo, slogan, mascot or subject-related graphics—either one or both doors or wrap the entire cart!

Features:

- Heavy-gauge steel construction—
Made in the USA
- Horizontal device storage
- Ships fully assembled with pre-wired options
- Meets ANSI international safety standards
- Key-locking front and rear doors
- Supports devices up to 15.6"
- 5" industrial duty swivel casters
- Rubberized, non-skid top surface
- Single-plug power cord
- Lifetime warranty on chassis / 3-year warranty on all electronic components



LOCKING
REAR DOOR
WITH CORD
STORAGE



HANDLE
KEY LOCK
PLUS
HASP LOOP



DURABLE
NON-SKID TOP

Lab Dimensions

Work Surface Ht: 107.9 cm / 42.5"

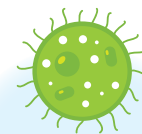
Handle Ht: 113.03 cm / 44.5"

Width: 69.22 cm / 27.25"

Depth: 72.65 cm / 28.6"

Weight: Approx.* 81.65 kg / 180 lbs.

** Empty weight—actual weight determined by configuration of system*



Device Sterilization Package Available

CleanZone Sanitation

Ozone technology efficiently kills germs, viruses and bacteria on all devices

20 to 40 USERS

Laptop Compartment Dimensions

Width: 30.5 cm / 12"

Depth: 38.1 cm / 15"

Height:

MM24 – 7.1 cm / 2.8"

MM36 – 4.3 cm / 1.7"

MM30 – 5.0 cm / 2.0"

MM40 – 3.8 cm / 1.5"

MM32 – 5.0 cm / 2.0"

CONFIGURATION OPTIONS**Charging Systems****AC SMARTBAR**

For budget-minded consumers, EarthWalk labs can be configured with AC power outlets for each device's AC adapter. Our unique zig-zag socket design ensures adapters do not block neighboring outlets.

AC-SMART Switching System

For those who prefer using AC adapters, the "AC-SMART" system manages electrical requirements with ease. It features up to four charging zones that auto-sense and distribute the electrical power needed in each zone. This prevents overloading and optimizes the charging cycle by incrementally increasing the active number of charging zones.

Pre-Wire Services (for AC-SMART)

EarthWalk can pre-wire your carts and stations with our certified USB-C PD adapters or your existing AC adapters, making deployment truly plug-and-play. Your setup is ready to use upon delivery.

iCHARGE

The iCharge system offers powered USB charging for iPads, tablets, or USB-C devices with high-efficiency hubs featuring USB (Type A) 5V 2.4A ports. Pre-installed USB, USB-C, or Lightning cables in each storage compartment streamline deployment and support.

HE-PD

Designed for Chromebooks and newer iPads, the "HE-PD" solution includes high-efficiency USB-C PD hubs with auto-sensing, multi-voltage ports (5V, 9V, 12V, 15V). Pre-installed USB-C or Lightning cables make it easy to deploy and support.

HE-PD65

The "HE-PD65" is a high-powered, high-efficiency USB-C PD charging solution with auto-sensing, multi-voltage ports (5V, 9V, 12V, 15V, 20V) that each deliver up to 65 watts, supporting Quick-Charge and higher-powered USB-C devices. Features include quick-swap USB-C cables, rear panel LED, and numbered ports for easy deployment and troubleshooting.

* Speak with your sales rep regarding device compatibility for this charging system.

Integrated Network Systems**Integrated Wireless Packages**

EarthWalk labs can be custom configured to integrate additional wireless access points or router systems. This system can provide complete wireless access or help enhance your existing infrastructure by providing additional access as the wireless clients are moved from location to location. The system provides Ethernet uplink to the cart and any required hardwired to wireless switching component. EarthWalk can supply the wireless components or custom integrate any specific or existing electrical components your network may require.

Integrated Hardwired Ethernet Packages

Provide your IT staff with the tools and convenience they need to deploy and support your mobile computer clients. Choose the EarthWalk integrated Ethernet package and deliver remote imaging or software updates to all client machines while they are secured and charging inside the cart. This system includes the installation of all network cabling and switching in the lab of your choice and features accessible network uplinks, integrated 10/100/1000 Ethernet Switching, and an available Ethernet cable in each laptop storage slot. EarthWalk can supply or custom integrate any specific or existing electrical components your network may require.

Lab Enhancement Options

- CleanZone Device Sterilization
- Custom Cart & Door Graphics
- Caster Upgrades
- Rack-mount Modification Kits
- Anti-Static Kit
- Enhanced Security Kits
- Extended Warranty Packages

Warranty

- Lifetime warranty on metal and structural components
- 3 years parts & labor

Optional extended warranty plans available

* It's possible that all devices may not simultaneously charge when using multiple AC adapters. This solution may require an electric timer to safely switch between groups of devices to prevent overloading the electrical circuit. Speak with your EarthWalk rep regarding this.

* Speak with your sales rep regarding device compatibility for this charging system



703.393.1940 | sales@EarthWalk.com | www.EarthWalk.com