



EarthWalk SaverSeries Rev5

Can be configured for 30 to 36 devices

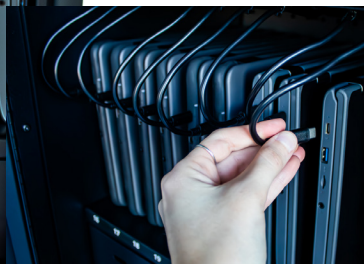
SUPPORTS: Windows 10 Mac chrome iPad android

The SaverSeries Rev5 allows you to store, secure, charge and deploy your choice of 30, 32 or 36 devices.

Compatible with Chromebook, laptop, tablet or iPad devices having up to 14" screen size.

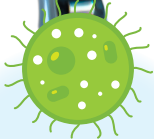
Multiple charging and upgrade options available.

Models: SS30.5 | SS32.5 | SS36.5



FEATURES

- Supports up to 36 devices w/ up to 14" screen size
- Numbered slots
- Heavy-gauge steel construction—Made in the USA
- Space saving small footprint
- Removable slot dividers
- Padded device storage area
- Eazy-Zip cable management system
- Dual top-mounted push handles
- Non-skid top surface
- Ships fully assembled w/ pre-wired options
- Key-locking front and rear doors
- 5" industrial duty swivel casters
- Two-wheel locking brakes
- Illuminated Master Power ON/Off switch
- Internal peripheral electrical outlets
- Single removable 10-foot power cord
- Meets ANSI international safety standards



Device Sterilization Package Available

CleanZone Sanitation

Ozone technology efficiently kills germs, viruses and bacteria on all devices



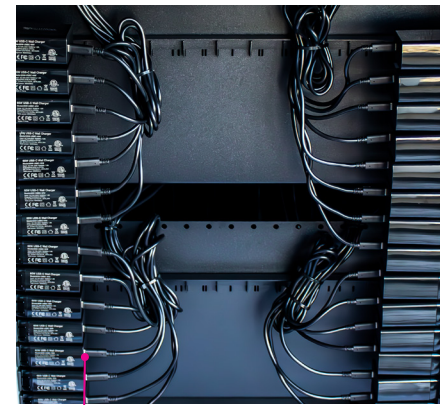
Select from five different charging system options



Integrated HE-PD system w/ pre-wired USB-C charging cables



Integrated HE-PD65 system w/ pre-wired USB-C charging cables



Integrated AC SMART system w/ pre-wired USB-C AC adapters & cables

CONFIGURATION OPTIONS

Charging Systems

AC SMARTBAR

For budget-minded consumers, EarthWalk labs can be configured with AC power outlets for each device's AC adapter. Our unique zig-zag socket design ensures adapters do not block neighboring outlets.

AC-SMART Switching System

For those who prefer using AC adapters, the "AC-SMART" system manages electrical requirements with ease. It features up to four charging zones that auto-sense and distribute the electrical power needed in each zone. This prevents overloading and optimizes the charging cycle by incrementally increasing the active number of charging zones.

Pre-Wire Services (for AC-SMART)

EarthWalk can pre-wire your carts and stations with our certified USB-C PD adapters or your existing AC adapters, making deployment truly plug-and-play. Your setup is ready to use upon delivery.

iCHARGE

The iCharge system offers powered USB charging for iPads, tablets, or USB-C devices with high-efficiency hubs featuring USB (Type A) 5V 2.4A ports. Pre-installed USB, USB-C, or Lightning cables in each storage compartment streamline deployment and support.

HE-PD

Designed for Chromebooks and newer iPads, the "HE-PD" solution includes high-efficiency USB-C PD hubs with auto-sensing, multi-voltage ports (5V, 9V, 12V, 15V). Pre-installed USB-C or Lightning cables make it easy to deploy and support.

HE-PD65

The "HE-PD65" is a high-powered, high-efficiency USB-C PD charging solution with auto-sensing, multi-voltage ports (5V, 9V, 12V, 15V, 20V) that each deliver up to 65 watts, supporting Quick-Charge and higher-powered USB-C devices. Features include quick-swap USB-C cables, rear panel LED, and numbered ports for easy deployment and troubleshooting.

* Speak with your sales rep regarding device compatibility for this charging system.

SS REV5 SPECIFICATIONS

Cart Dimensions

Width: 56.2 cm / 22.13"
 Depth: 56.2 cm / 22.13"
 Height: 92.7 cm / 36.63"
 Weight: Approx.* 50 kg / 110 lbs.

* Empty weight—actual weight determined by configuration of system

Device Storage Dimensions

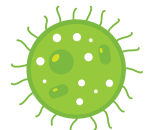
Width:
 SS30.5 (30-bay) – 3.30 cm / 1.3"
 SS32.5 (32-bay) – 3.04 cm / 1.2"
 SS36.5 (36-bay) – 2.54 cm / 1.0"
 Depth: 38 cm / 15"
 Height: 25.4 cm / 10"

ADDITIONAL OPTIONS

Option: Device Decontamination

CleanZone Sanitation

EarthWalk utilizes ozone technology to safely and efficiently kill germs, viruses and bacteria on all devices inside the cart. Decontamination is a quick cycle and there is no chemical residue: Ozone dissipates back to oxygen. Can fully sterilize devices more efficiently than UV or chlorine/chemicals.



Option: Custom Graphic

Door Graphics

SaverSeries cart doors can be personalized showing your school logo, slogan, mascot or subject-related graphics.



Cart Enhancement Options

- CleanZone Device
- Decontamination System
- Customized Door Graphic
- Pre-Wiring Services
- Data & Power Cables
- Anti-Static Kit

Warranty

- Lifetime warranty on chassis
- 3 years warranty on electrical & mechanical components
- 1 years warranty on consumable components
- 3 years labor

Optional extended warranty plans available