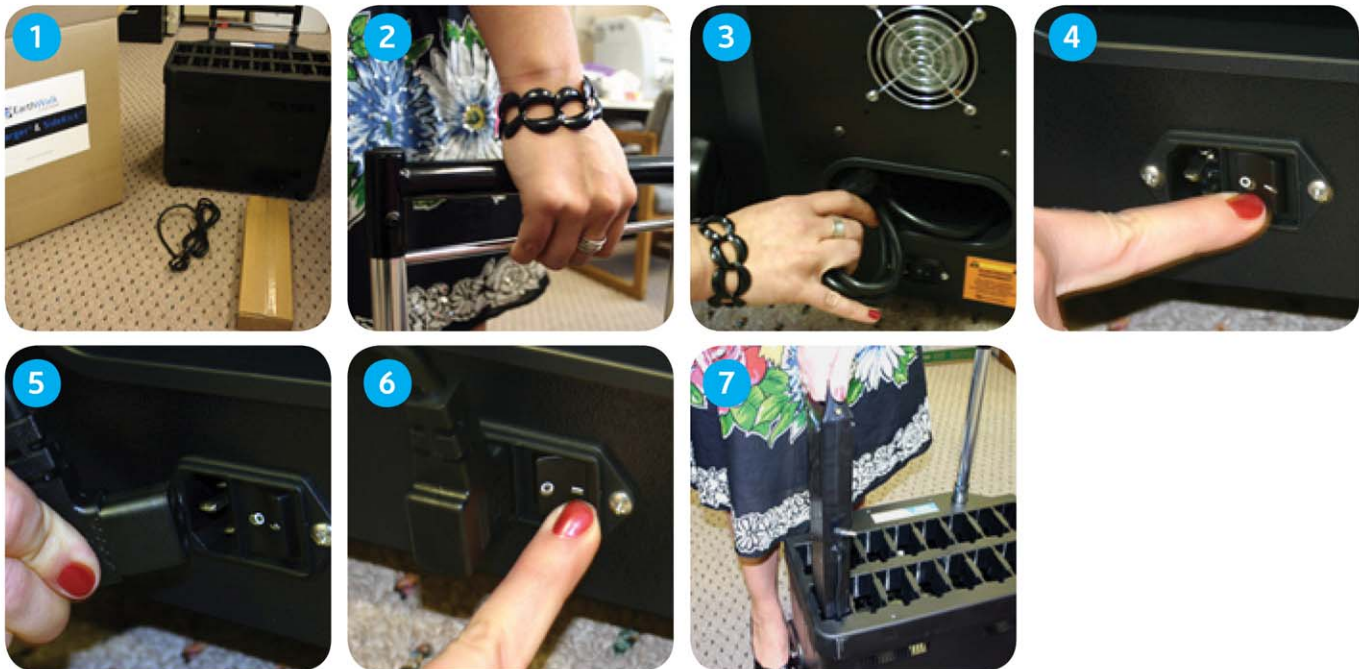


You've Got the *Power!*

Thank you for purchasing the **eCharger** Mobile Cart and **SideKick** PowerPack Solution.
Now you have the power to keep your computer lab environment running ALL DAY!
Please read over this guide to help you set up and maintain your new battery system.

Setting up your *eCharger*



- 1** | Remove the **eCharger** and **SideKick** from the box. (Retain all packing materials.)
- 2** | Squeeze the **"handle bar"** and pull up to release the handle - handle will **"click"** to the locked position.
- 3** | Locate and remove the power cord from the storage compartment (in the back of the **eCharger**)
- 4** | Switch power to the **"Off"** position.
- 5** | Plug the **"female"** connector of the power cord into the **eCharger** power switch and the **"male"** end of the power cord into a standard AC wall outlet.
- 6** | Switch the **eCharger** power switch to the **"On"** position.
- 7** | Insert each **SideKick** PowerPack into any of the available **eCharger** charging slots.

Charging your *SideKick* PowerPack



- Insert the SideKick PowerPack into the eCharger Caddy and within five (5) minutes a "**Blinking Green**" LED indicates that the eCharger is "On" and that the SideKick is "Charging."
- When the SideKick LED turns "**SOLID Green**" it is then fully charged.
- For optimal performance and extended battery life, charge your SideKick PowerPacks overnight - the SideKick's will be fully charged after 12-14 hours.

Operating your *SideKick* PowerPack



- 1 | Remove the **SideKick** PowerPack from the **eCharger** and place it on a flat surface under or near your laptop computer.
- 2 | Plug the **SideKick** power cord (matched to your specified brand of laptop) into the power input connector of your laptop. (This is the same connector used for your laptop's AC power adapter.)
- 3 | Power up your laptop and use as usual.
- 4 | A "**SOLID Green**" LED with no blinking) indicates that the SideKick has **full to half power capacity**.
- 5 | A "**Blinking Green**" LED that STEADILY blinks on and off at 1-second intervals indicates your SideKick is at **half to low power capacity**. [Go immediately to Step 7.]
- 6 | A "**Blinking Green**" LED that RAPIDLY blinks on and off at 1/2-second intervals indicates your SideKick is at **low or nearly depleted power capacity**.
- 7 | You should immediately save your work, power down your laptop, and place the **SideKick** back into the **eCharger** for recharging.

Maximizing your *SideKick* PowerPack

Three Approaches

1 | The Most Economical Approach

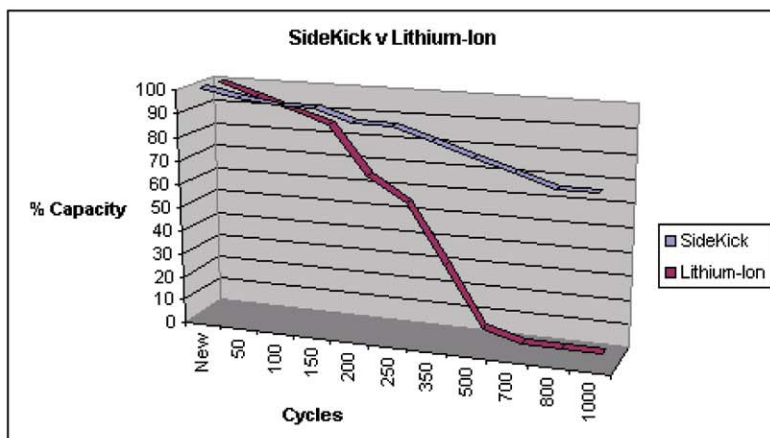
Use the SideKick and remove your older laptop battery

One of the primary reasons customers choose the SideKick and eCharger solution is the efficiency and cost savings it offers when compared to the process of replacing traditional laptop batteries. Rather than spending additional money year after year on replacement laptop batteries, you can provide your laptop with enough battery power to last the entire school day by using only the SideKick. The SideKick provides 120 watts of operational power to any laptop, or 2 to 3 times the power provided by most traditional laptop batteries. In other words, removing your old laptop battery and using the SideKick by itself will enable your laptop to operate 2 to 3 times longer than it would using your original laptop battery. Simply remove your original laptop battery and connect the SideKick to the DC input connector. In addition, the SideKick was developed using the latest advancements in battery chemistry so the operational time will decrease at a much slower rate than that of traditional Lithium-Ion batteries.

Example

Your original laptop battery is a 40-watt battery that, when first purchased, powered your laptop for 3 hours. The operating time is now decreasing and you decide to remove your laptop battery and use only the 120-watt SideKick battery. Now you have 3 times the original battery power and you can successfully operate the laptop for 9 hours without interruption.

Original Laptop Battery @ 40w = 3 hours operating time (when new)
SideKick @ 120w = 9 hours operating time



NOTE: In this mode be sure you are familiar with the Green LED indicator light settings on the SideKick PowerPack to determine when the battery needs to be recharged.

LED	STATUS
SOLID	100% > 50%
STEADY Blink	50% > 10% (1-second on, 1-second off)
RAPID Blink	10% > 0.5% (1/2-second on, 1/2-second off)
OFF	<0.5%

Maximizing your **SideKick** PowerPack (Cont'd.)

2 | The Long Lasting Approach

Use the SideKick PowerPack in conjunction with a newer, fully charged laptop battery

To assure the longest lasting operating time, connect the SideKick to your laptop when your original laptop battery is fully charged. This is the ideal mode as the laptop will pull power from both batteries, as needed, and provide maximum operating time.

Example

Your original laptop battery is a 40-watt battery that powers your laptop for 3 hours:
You decided to extend the length of your operating time by using your laptop battery in conjunction with 120-watt SideKick battery. You now have 160-watts of combined battery power that enables you to operate the laptop for 12 hours without interruption.

Original Laptop Battery @ 40w (3 hours) + SideKick @ 120w (9 hours) =
Total 160w = 12 hours operating time

3 | The Wrong Approach

Use the SideKick PowerPack in conjunction with your, drained or dead laptop battery

Connecting the SideKick to your laptop when your laptop battery is "dead" or "fully-drained" creates a less than ideal working environment for your laptops. In this mode, the laptop will pull power from the SideKick at an extreme rate in an attempt to power your laptop and simultaneously charge the laptop battery.

If your laptop battery is older and does not maintain its original charge life, the total operating time can be dramatically reduced. For maximum operating time, replace or remove any older battery from your laptop.

Example

Your original laptop battery is a 40-watt battery that, after a period of use, now only powers your laptop for 1 hour when fully charged: You decided to extend the length of your operating time by using your laptop battery in conjunction with the 120-watt SideKick battery; however, since your laptop battery provides only a limited time of operation, the majority of the SideKick's power is wasted and results in excess heat. The result is that 55-60 watts of the the SideKick battery power is being used to charge the 40-watt laptop battery. When charging is complete, only a limited amount of operating time can be provided.

SideKick @ 120w - SideKick to Charge Original Battery @ -60w (4.5 hours)
Total 160w = 12 hours operating time
SideKick Power Remaining @ 60w (4.5 hours)
Original Laptop Battery Charged @ 40w (1 hour) =
Total 100w (approximately 5.5 hours combined)

NOTE: In this mode the operating system will notify you when your total battery power is running out and when the batteries need to be charged.