



# EarthWalk MiniMax Series

Accommodates 24 to 40 users

SUPPORTS:



EarthWalk's MiniMax™ series of mobile carts are designed to deploy the maximum number of devices when classroom space is at a minimum.

Available in 24- to 40-user models, the MiniMax series features premium, welded steel construction with a budget-minded, small footprint and optional configurations—ensuring that even your largest classes are covered and connected.

### Optional Device Sterilization Package CleanZone Sanitation

EarthWalk utilizes ozone technology to safely and efficiently kill germs, viruses and bacteria on all devices inside the cart. Decontamination is a quick cycle and there is no chemical residue: Ozone dissipates back to oxygen. Can fully sterilize up to 40 devices more efficiently than UV or chlorine/chemicals.



### Customized Graphic Options Door Graphics and Full Cart Wraps

Carts can be personalized showing your school logo, slogan, mascot or subject-related graphics—either one or both doors or wrap the entire cart!

**Features:**

- Heavy-gauge steel construction—  
Made in the USA
- Horizontal device storage
- Ships fully assembled with pre-wired options
- Meets ANSI international safety standards
- Key-locking front and rear doors
- Supports devices up to 15.6"
- 5" industrial duty swivel casters
- Rubberized, non-skid top surface
- Single-plug power cord
- Lifetime warranty on chassis / 3-year warranty on all electronic components



LOCKING  
REAR DOOR  
WITH CORD  
STORAGE



HANDLE  
KEY LOCK  
PLUS  
HASP LOOP



DURABLE  
NON-SKID TOP

**Lab Dimensions**

**Work Surface Ht:** 107.9 cm / 42.5"

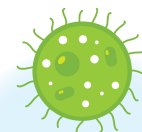
**Handle Ht:** 113.03 cm / 44.5"

**Width:** 69.22 cm / 27.25"

**Depth:** 72.65 cm / 28.6"

**Weight:** Approx.\* 81.65 kg / 180 lbs.

\* Empty weight—actual weight determined by configuration of system

**Device Sterilization Package Available****CleanZone Sanitation**

Ozone technology efficiently kills germs, viruses and bacteria on all devices

20 to 40  
USERS

**Laptop Compartment Dimensions**

**Width:** 30.5 cm / 12"

**Depth:** 38.1 cm / 15"

**Height:**

MM24 – 7.1 cm / 2.8"

MM36 – 4.3 cm / 1.7"

MM30 – 5.0 cm / 2.0"

MM40 – 3.8 cm / 1.5"

MM32 – 5.0 cm / 2.0"

**CONFIGURATION OPTIONS****Charging Systems****AC Smart Bar\***

For budget-minded consumers, EarthWalk labs can be configured with AC power outlets in each storage compartment for use with each device's AC adapter. But this is no basic power bar: We have staggered the sockets in a zig-zag formation, ensuring that adapters will not block other sockets.\*

**Digital AC-SMART Switching System**

Your devices' AC adapters can be configured with our Digital AC-SMART Switching system, which can auto-sense the amount of electrical draw required by each device's AC adapter and safely switch between groups of devices to prevent overloading the electrical circuit. The digital smart switching system will monitor and continue increasing the number of devices that are being simultaneously charged to help shorten the total lab charging cycle.

**Pre-Wired Solutions for USB Type-C**

The latest standard in charging portable devices, we can pre-wire your carts and stations with our certified USBC-PD adapters or you can supply us with your existing AC adapters—either way we'll take care of the wiring headache for you. Literally plug-n-play as soon as your order is delivered to you. Combine USB-C with our AC-SMART system and get managed charging power for all of your devices from a single power cord, quickly charging all devices and eliminating circuit overload.

**iCharge—Powered USB Charging for iPads, Tablets or USB-C Devices**

The iCharge solution features a high-efficiency central power supply system with ten USB 5V 2.4A charging ports. Additional iCharge systems can be daisy-chained to increase system capacities. Pre-installed USB, USB-C or Lightning data cables in each storage compartment make deployment and support convenient.

**HE-PD—High Efficiency USBC-PD Charging System\***

HE-PD is a pre-wired USBC-PD charging solution featuring a high-efficiency central power supply system with six USBC-PD auto-sensing, multi voltage (5V,9V,12V,15V) charging ports. Additional HE-PD systems can be integrated to increase system capacities. Pre-installed USB-C or Lightning data cables in each storage compartment make deployment and support convenient.\*

**HE-Z – High Efficiency Charging System\***

This patented system provides the most energy-efficient and easy approach to charging groups of laptops\*—no AC adapters needed! EarthWalk's High Efficiency (HE) charging integrates a central power supply and control circuit board system to distribute simultaneous power to every device with up to 85% more energy efficiency than charging with AC Adapters. HE-Z charging cables can be easily swapped when devices are changed or updated and this system also allows multiple brands of devices to be stored and charged in one cart.

**Integrated Network Systems****Integrated Wireless Packages**

EarthWalk labs can be custom configured to integrate additional wireless access points or router systems. This system can provide complete wireless access or help enhance your existing infrastructure by providing additional access as the wireless clients are moved from location to location. The system provides Ethernet uplink to the cart and any required hardwired to wireless switching component. EarthWalk can supply the wireless components or custom integrate any specific or existing electrical components your network may require.

**Integrated Hardwired Ethernet Packages**

Provide your IT staff with the tools and convenience they need to deploy and support your mobile computer clients. Choose the EarthWalk integrated Ethernet package and deliver remote imaging or software updates to all client machines while they are secured and charging inside the cart. This system includes the installation of all network cabling and switching in the lab of your choice and features accessible network uplinks, integrated 10/100/1000 Ethernet Switching, and an available Ethernet cable in each laptop storage slot. EarthWalk can supply or custom integrate any specific or existing electrical components your network may require.

**Lab Enhancement Options**

- CleanZone Device Sterilization
- Custom Cart & Door Graphics
- Caster Upgrades
- Rack-mount Modification Kits
- Anti-Static Kit
- Enhanced Security Kits
- Extended Warranty Packages

**Warranty**

- Lifetime warranty on metal and structural components
- 3 years parts & labor

*Optional extended warranty plans available*

\* It's possible that all devices may not simultaneously charge when using multiple AC adapters. This solution may require an electric timer to safely switch between groups of devices to prevent overloading the electrical circuit. Speak with your EarthWalk rep regarding this.

\* Speak with your sales rep regarding device compatibility for this charging system



703.393.1940 | sales@EarthWalk.com | www.EarthWalk.com